



Oslo Bulk 4



General info

- Built	2010
- Port of Registry	Singapore
- Flag	Singapore
- Imo	9589956
- Class	GL + 100 A5 E G
- Owners P+I	Gard Oslo
- Disp. Owners P+I	Gard Oslo

Communication

- Call Sign	9V8769
- E-Mail	oslobulk4@hav.no
- Phone	+870-773-15-7080
- Mobile	-
- Fax	-
- Telex	456443310 / 456443313

Tonnage

- Dwt	8.039 dwt
- GT/NT	5.629 / 2.867 mt
- Panama	4.832
- Suez	5.858

Type SINGLEDECKER OPEN HATCH/BOXY BULKER

Dimensions

- Loa	108,20 m
- Lpp	103,90 m
- Beam	18,20 m
- Draft Summer	7,057 m SSW
- Airdraft - keel/mast	-

Capacity

- Bale cbm	Grain: abt 10.244 cbm - 1: 2.725 - 2: 3.903 - 3: 3.616 cbm
- Bale cubic feet	Grain: abt 361.755 cbft

Hatch

- Weatherdeck	no 1: 18,431 - no2: 26,288 - no 3: 25,588 all x 15,594m
- Tweendeck	None - grain and cement holes in w/deck
- Type of covers	TTS Hydraulic folding (McGregor type)

Hold

- Hold dimensions	no1: 18,9x15m - no 2: 29,4x15m - no3: 27,3x15m
- Heights	no1: 11 m - no 2+3: 9 m

Hold Equipment

- Imo	Fitted as per Document of Compliance
- Fittings	co2 / smoke detector fitted / 6 Air changes beh / Great Lakes fitted
- Bulkheads	Hold ladders in bulk head AMSA approved except for slanted ladders

Permissible Loads

- Tanktop	15 mt/sqm
- Tweendeck hatch	n/a
- Weatherdeck hatch	2,2 mt/sqm

Gear

- Type of gear	2 x 25 mt cranes - comb upto abt 50 mt
- Special	outreach on 25 mt abt 26 m

Containers

- Hold	-
- Deck	20' - 109 or 40' - 52
- Total	20' - 109 or 40' - 52

Engine

- Mainengine	MAK 6M32C - 2998KW
- Aux. Engine	2 x 365 kW
- Shaftgenerator	360 kW, 1800 rpm
- Bowthruster	yes - 250 kW FPP

Speed / Consumption

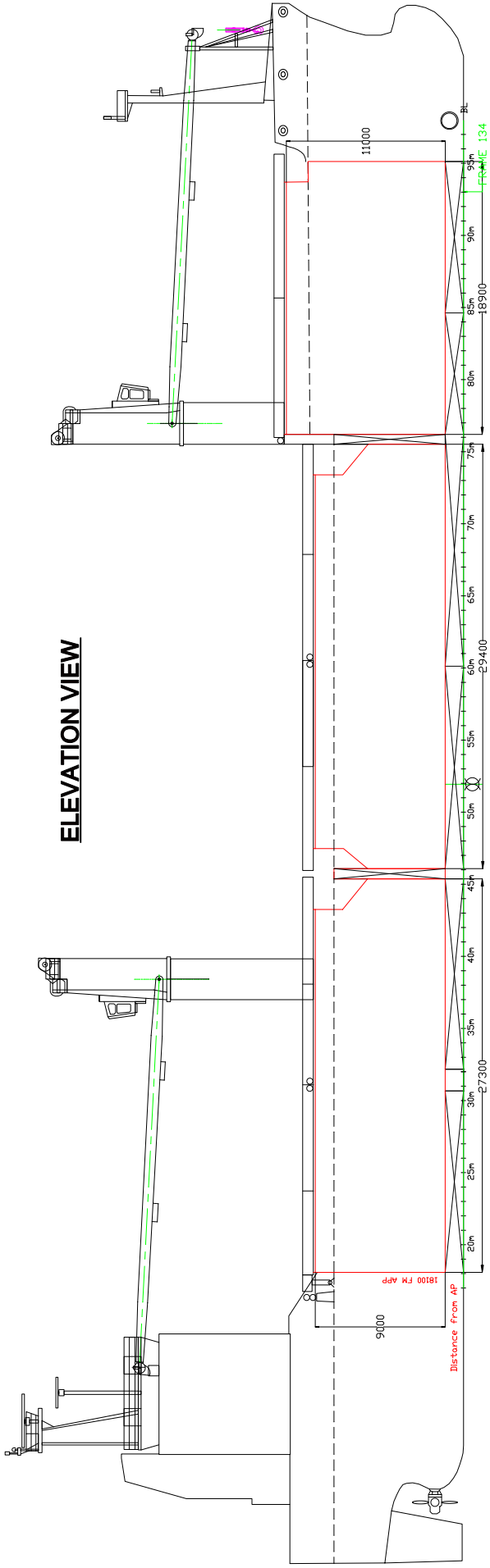
abt 12 knots on abt 13 mt ifo 380 RMG
in port: idle/working: abt 1 / 1,5 mt go DMA

Tank capacity

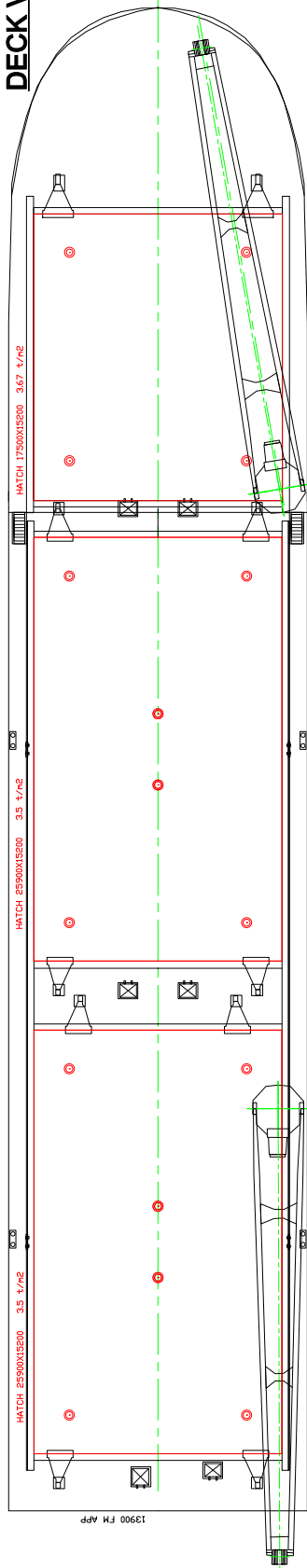
- Fuel IFO	364 mt
- Fuel GO	46 mt
- Freshwater	83.2 mt
- Ballast	2529,7 mt

Oslo Bulk Type

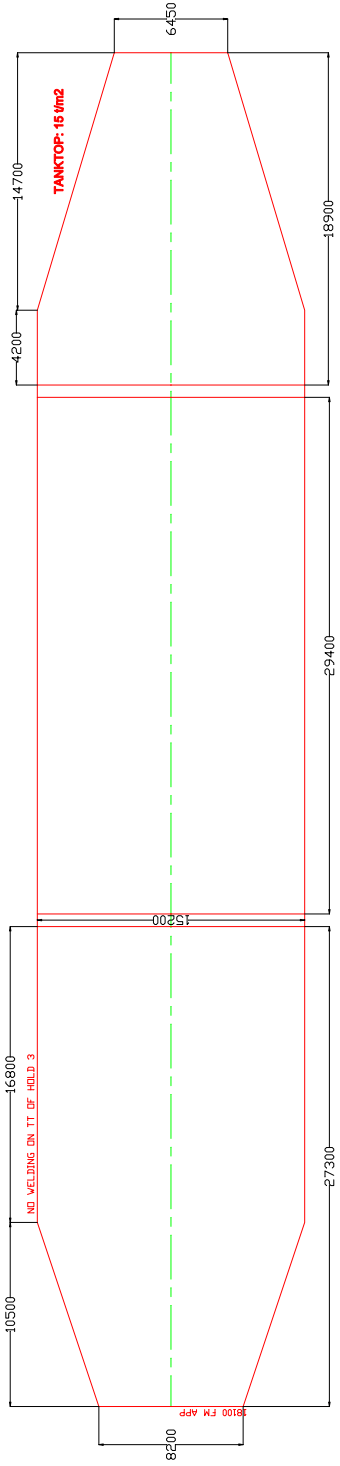
ELEVATION VIEW



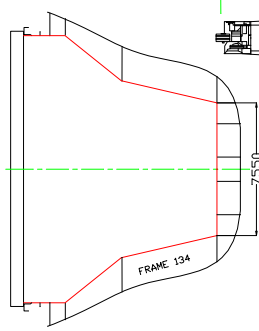
DECK VIEW



TANKTOP



FRAME 134



MIDSHIPS SECTION

