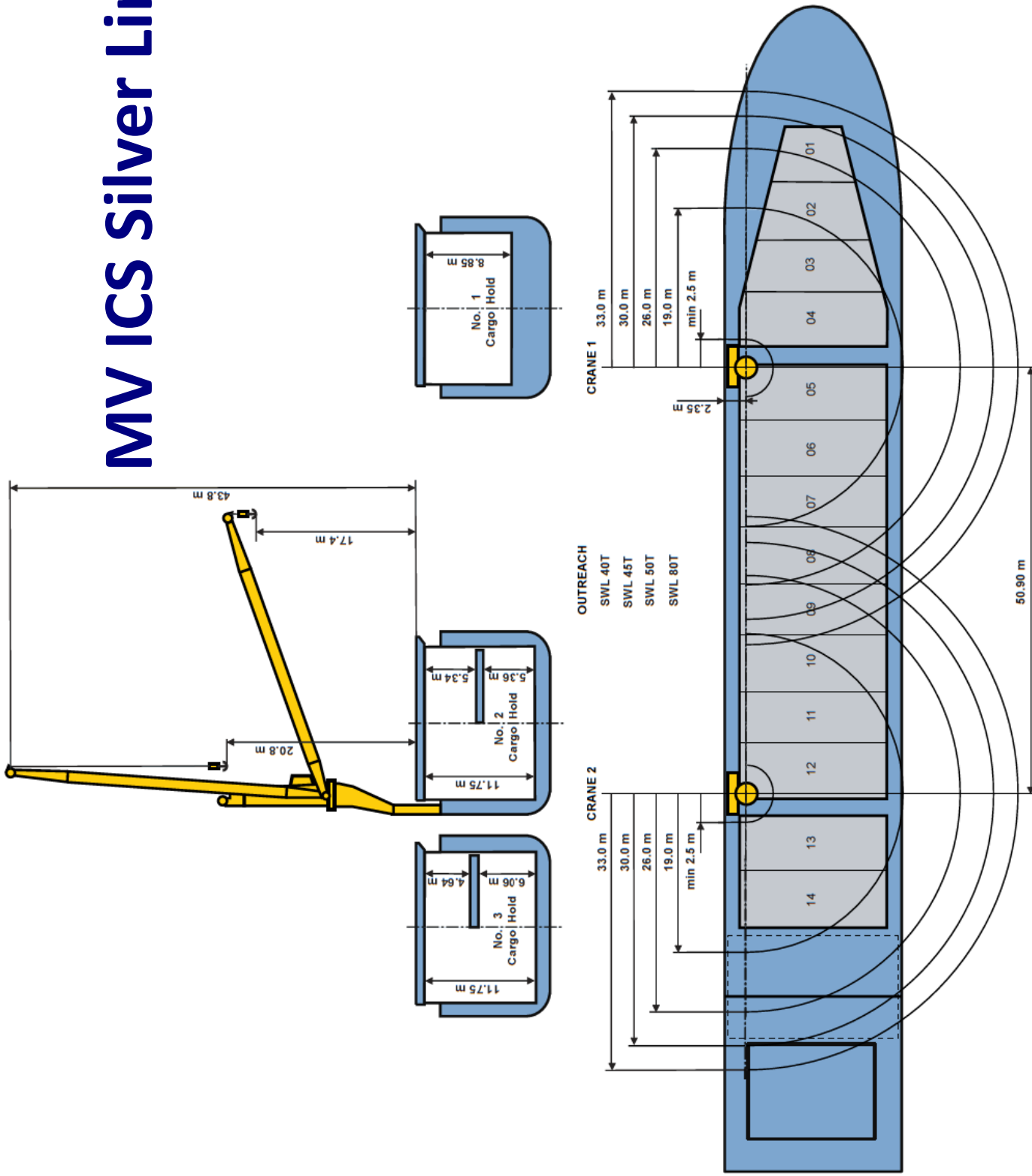


MV ICS Silver Lining

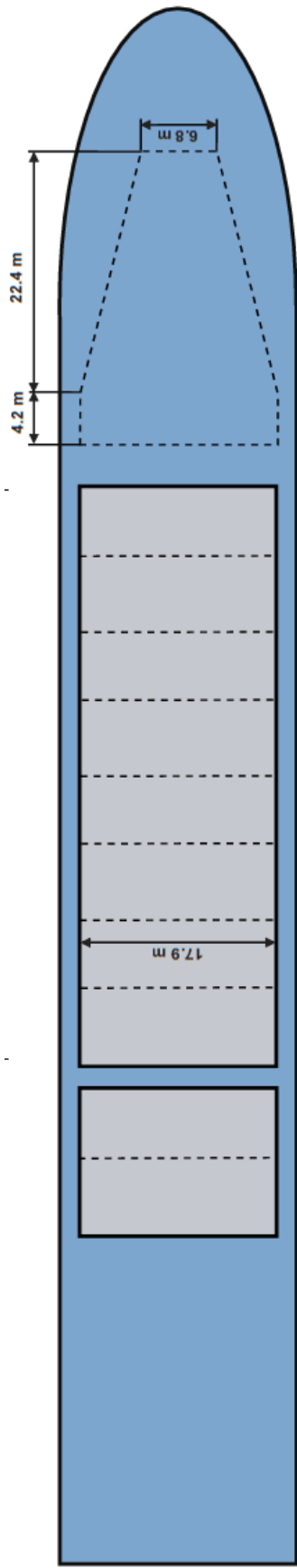


MV ICS Silver Lining

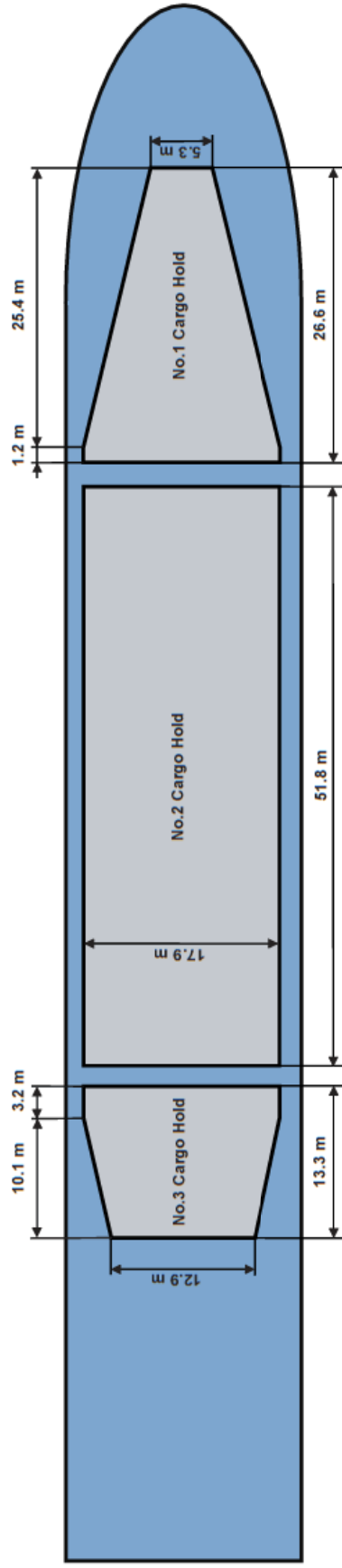


144T COMBINED LIFTING CAPACITY

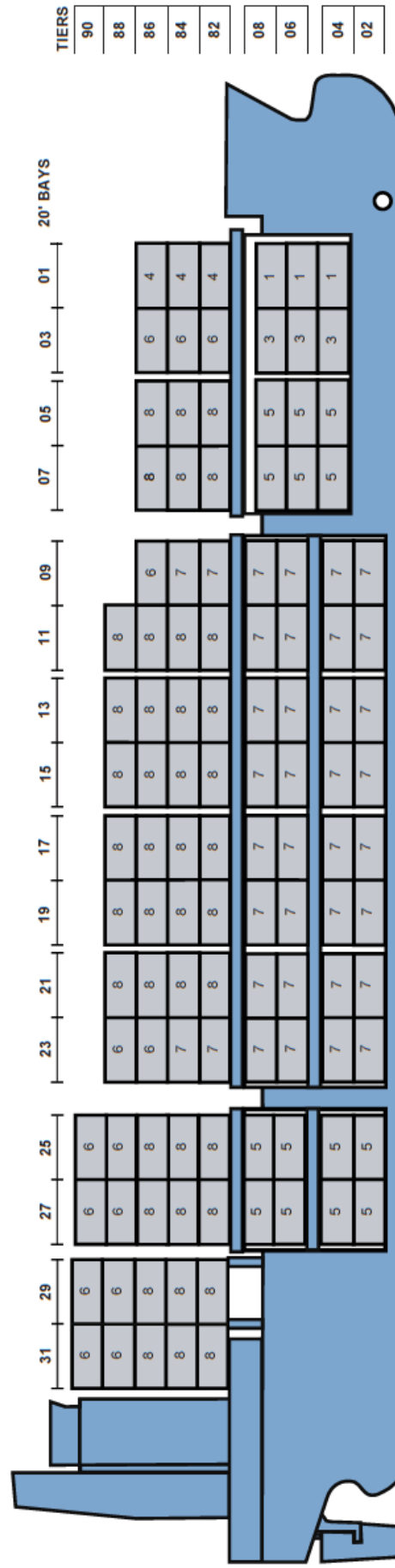
DECK



TWEEN DECK



LOWER HOLD



766 TEUS

++++ Details believed to be correct, but are given without guarantee +++++

MV ICS Silver Lining Antigua and Barbuda 2005

IMO number/Flag/Build:

- MV ICS Silver Lining : 9314351 / Antigua and Barbuda/ 2005

Tonnage:

-DWT: 12.564mt (summer)
 -Weight of tweendeck pontoons: About 32mt, total 320mt
 -GT/NT: 9.990/4.483
 -Suez: 10.395/8.469

Type:

- MPCV (suitable for : bulk, container, dang, cargo, heavy lift.)

Dimensions:

- Length overall: 139.95m
 - Length between perpendiculars: 133.50m
 - Breadth moulded, depth moulded: 21,50m/11,65m
 - Draft: 8,4195m
 - Distance from keel to hatch top: 13,40m
 - Distance from keel to highest point: 40.20m
 - Distance from waterline to top of hatch coming in:
 A. Fully loaded condition: 5,20m
 B. Fully Ballast condition: 8,95m

Holds:

- Number of Holds 3
 - Grain/bale capacities by hold including hatchways:

A (all 10 tweendeck panels out of the holds)

Hold 1: 3.201,49 m3
 Hold 2: 11.019,81 m3
 Hold 3: 2793,41 m3
 Total : 17.014,71m3

B (all 10 tweendeck panels fitted in the holds)

Hold 1: 3.201,49 m3
 Hold 2: 10.186 m3
 Hold 3: 2.583 m3
 Total : 15.970m3

- Flat tank top measurements

Hold 1: 26,60 x 5,40 forw./ 17,90 aft
 Hold 2: 51,80 x 17,90
 Hold 3: 13,30 x 17,90 forw./ 13,00 aft
 - Max. uniform tanktop load 18mt/m2

Hatches :

- Number of hatches: 3
 - Make and type of hatch covers: MacGregor, pontoon type
 - Hatch size
 Hatch 1: 26,60 x 6,80f / 17,90 aft
 Hatch 2: 51,80 x 17,90
 Hatch 3: 13,30 x 17,90
 - Max uniform load of hatch covers: 3,5tm2
 - Distance from ships rail to edge of coming each side: 1,80m
 - Distance from bow to for off 1st hold: 14,60m
 - Dist. From stern to laft of last hold: 29,60m
 - Is vessel fitted with cement holes: No

CO2 : - Holds are CO2 fitted



Details are believed to be correct , but are not guaranteed.

Speed/consumption/fuel engine:

- Vessel speed and consumption Abt. 14 Knots on about 23 tons/day
 Abt. 17 Knots on about 36 tons/day
 - Consumption when idle: IFO 2-3 TNS
 - Consumption when working w. gear IFO 3,6-4 TNS / 16 hours crane use
 - Bunker capacity HFO/MDO About 990mt / 75 mt
 - Engine make and type: Hitachi B&W 8S41MC
 - Max output kW/RPM: 8.200 /136
 500kW Bow Thruster

Ventilation :

- Holds are fitted with smoke detection systems
 - Hold 1 and 3 : 6 air changes / hour
 - Hold 2: 10 air changes / hour

Cargo gear :

- Geared state make and type: MacGregor, hydro-electric
 -Nr And capacity of canes/derricks: 2 x 80/60/45/40mt, port side
 - Outreach of gear beyond ships rail 16,5-22,5-27,5-30,5m at port side
 - Slewing—luffing —hoisting speeds: 0,7/min-100s-8/8/16/16-32 m high
 - Is gear combinable for heavy lift: Yes, max: lifting 144mt
 Yes

- Vessel is fitted with lights at each hatch for night work

Container bulkers:

- State capacity in direct stow if TEU/FEU basis: 766 TEU
 - In holds on deck: 306/460
 - 14 Tons homogeneous weight: 538 TEU
 - All containers within reach of vessels gear:
 - Container spreader onboard: 1x20 and 1x 40 spreader
 - State number of reefer plugs: 120 sockets—on deck only
 - Advised max allowance stack load and nr. of tiers on/under deck of 20":

	In hold/ tiers	On deck / tiers
Hold 1:	120/3	60/3
Hold 2:	120/4	60/4
Hold 3:	120/4	60/5
Aft of 3 :	-	60/5

Tweendeckers:

- Has vessel folding tweens? No
 - Holds fitted with tweendecks: Hold 2 and 3
 - Type of tweendeck hatch covers: Pontoon
 - Nr. Of tweendeck hatch covers: 8 in hold 2 and 2 in hold 3
 - Max. uniform load per m2: 3,5mt / m2
 - Weight per tweendeck pontoon: About 32mt, total 320mt