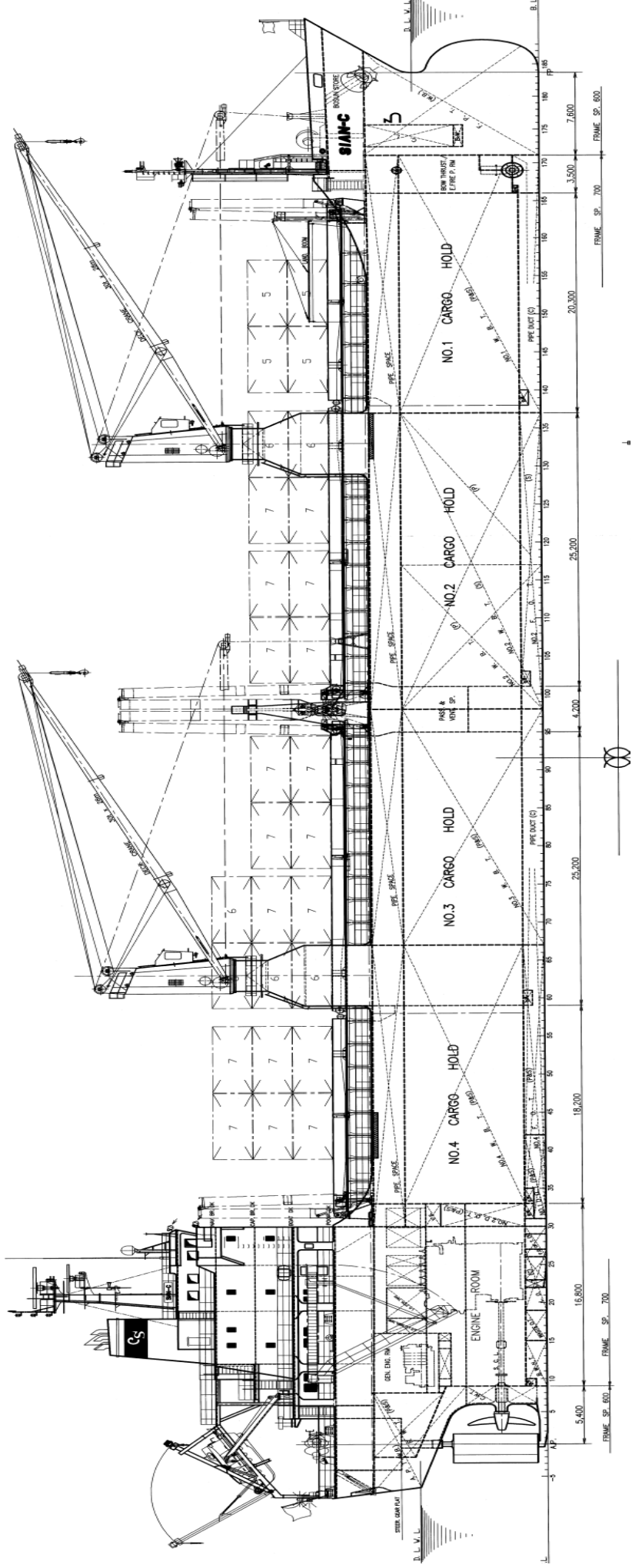


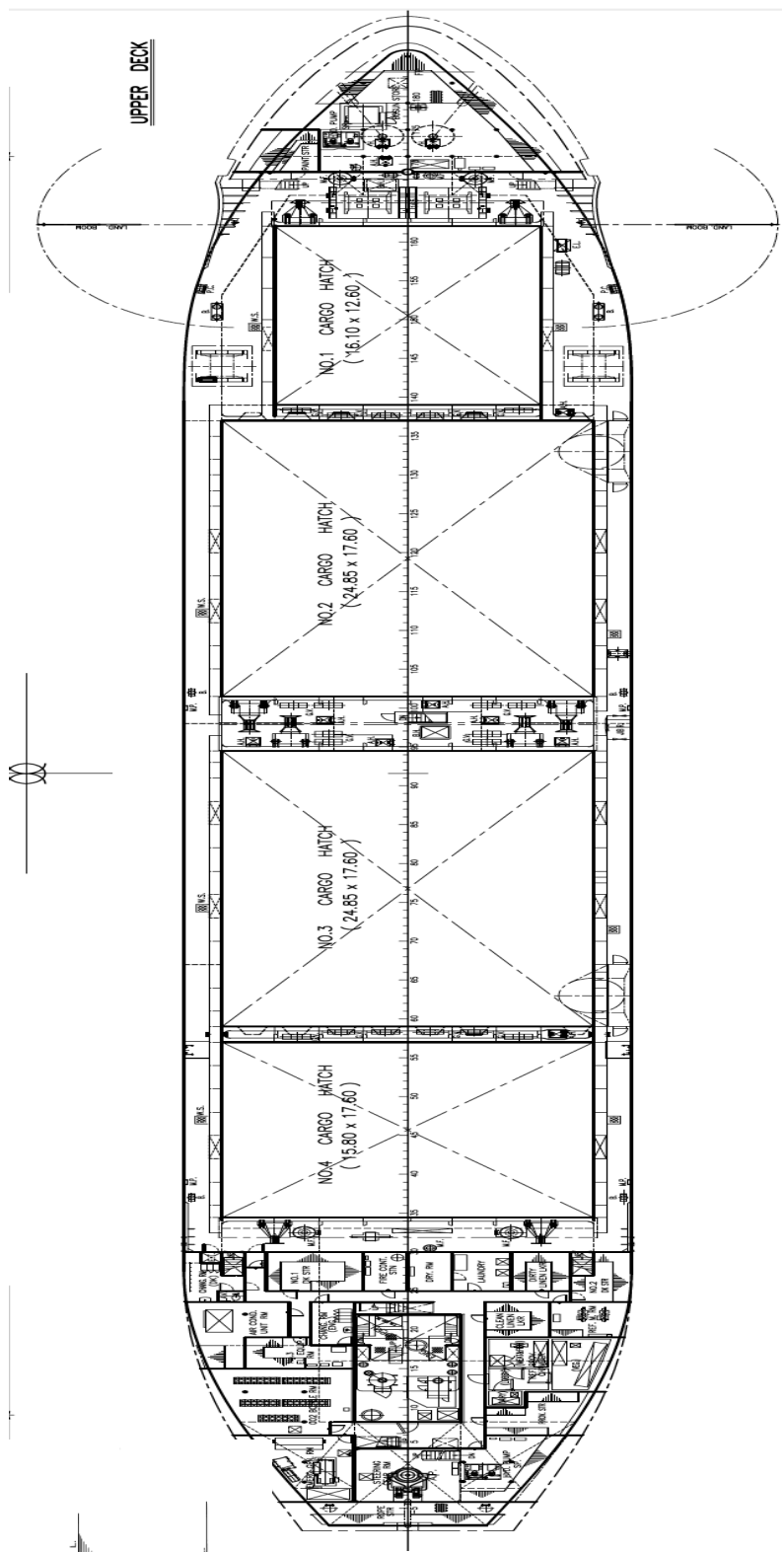
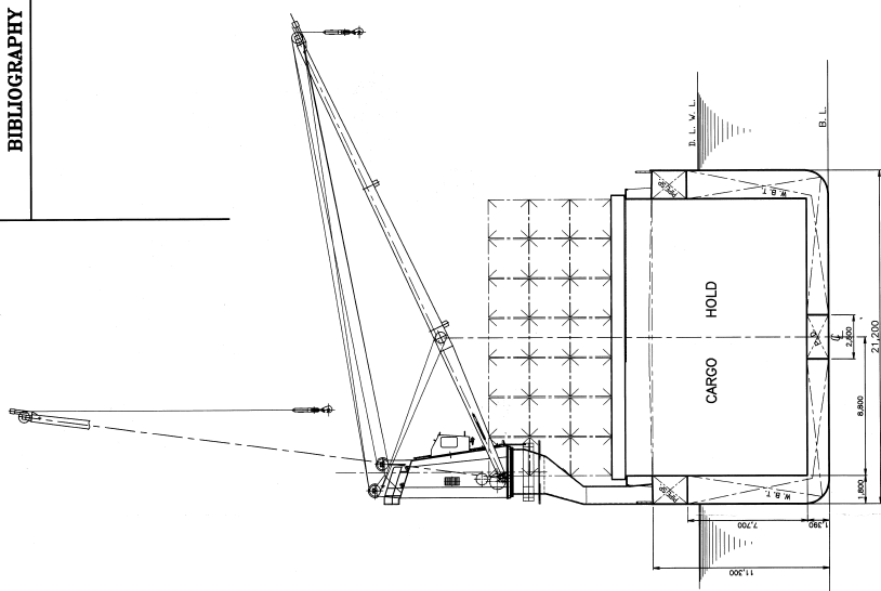
MV ICS Silver Spirit



MV ICS Silver Spirit



BIBLIOGRAPHY



MV ICS Silver Spirit Bahamas 2006

IMO / Flag / Build:

- MV ICS Silver Spirit : 9338149 / Bahamas/ 2006

Call Sign: C6FO3

Official No / MMSI: 7001462 / 311001152

Tonnage:

-DWT: 13,479mt (summer)

-GT/NT: 9,177/4,895

Type:

- MPCV (suitable for : bulk, container, dangerous cargo, heavy lift.)

Dimensions:

- Length overall: 136.43m

- Length between perpendiculars: 126.88m

- Breadth moulded, depth moulded: 21.20m

- Draft: 8,60m

- Build: Kyokuyo Shipyard Corp—Shimonoseki Japan 2006

Holds:

- Number of Holds 4

- Grain/bale capacities by hold including hatchways:

Hold Capacity)

Hold 1: 3,317.94m3

Hold 2: 5162.27 m3

Hold 3: 5164.01 m3

Hold 4: 3447.44 m3

Total : 17.019.66m3

Hatches :

- Number of hatches: 4

- Make and type of hatch covers: MacGregor, folding type

- Hatch size

Hatch 1: 16,10 x 12.60

Hatch 2: 24.8 x 17.60

Hatch 3: 24.85 x 17.60

Hatch 4: 15.80 x 17.60

- Max uniform load of hatch covers:

- Distance from ships rail to edge of coming each side: 3,5tm2

- Distance from bow to for off 1st hold: 1,80m

- Dist. From stern to laft of last hold: 14,60m

- Is vessel fitted with cement holes: 29,60m

No

CO2 : - Holds are CO2 fitted All holds and fixed detection

Details are believed to be correct , but are not guaranteed.

Speed/consumption/fuel engine:

- Vessel speed and consumption Abt. 14 Knots on about 15 tons/day

- Consumption when idle: IFO 0.8 TNS

- Consumption when working w. gear IFO 1.86 TNS

- Bunker capacity HFO/MDO About 750mt / 75 mt

- Engine make and type: MAN 7S35MC

- Max output kW/RPM: 5180 kW /136

500kW Bow Thruster

Ventilation:

Holds 1 to 4 6 air changes per hour

Holds 1 to 4

Cargo gear :

- Geared state make and type: MacGregor, hyro-electric

-Nr And capacity of canes/derricks: 2 x 30mt, port side

Outreach Max 28m

Outreach of gear beyond ships rail 28m port ide and 10 STBD

- Are winches electro-hydraulic: Yes

- Vessel is fitted with lights at each hatch for night work

Container bulkers:

State capacity in direct stow 177 TEU

Equipment:

-BWTP : (Fitted) Alpha Laval Pure ballast 3.2 600 Std